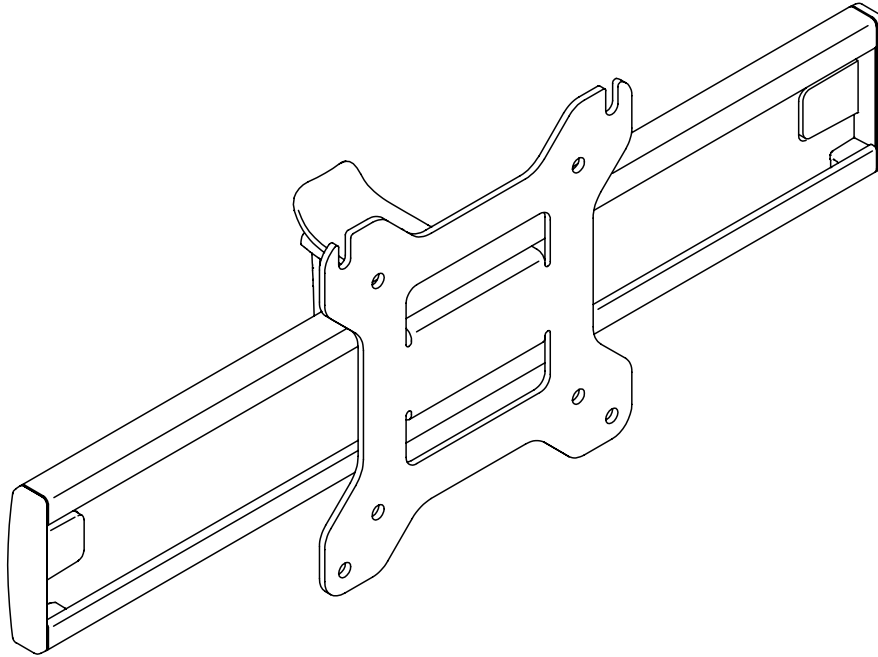
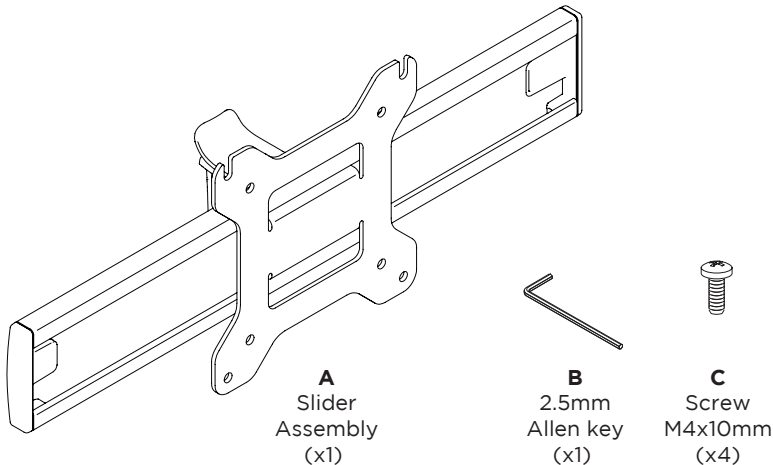


## Slider



### COMPONENT CHECKLIST



Desk

Wall

### REQUIRED TOOLS

- Phillips Head Screwdriver

### WEIGHT RANGE

0 - 7kg  
(0 - 15lbs)

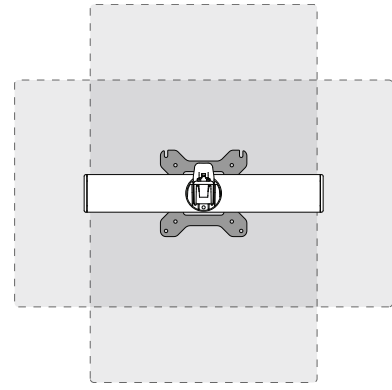
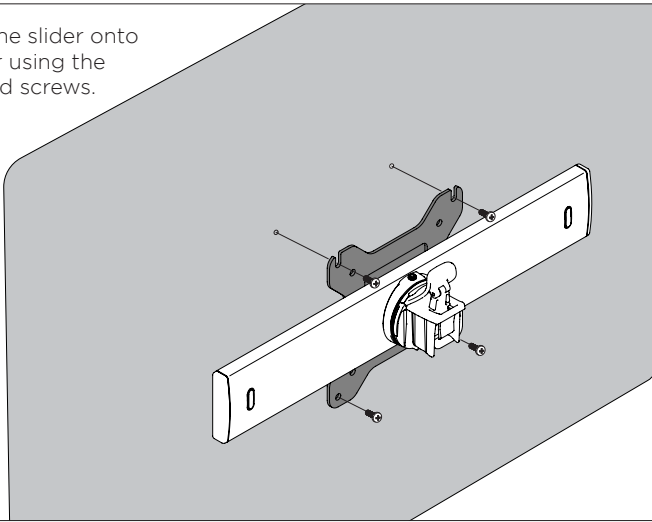
Monitor weight should be within the weight range of all modular elements that make up the complete monitor mounting solution.

### IMPORTANT INFORMATION

- ! Please ensure this product is installed as per these installation instructions.
- ! Curved monitors, deep devices (such as all-in-one PCs) and offset VESA locations exert additional leverage that can exceed the capacity of the mount even though the monitor weight may be within the stated range.
- ! The manufacturer accepts no responsibility for incorrect installation.
- ! This product is compatible with AWM Series monitor arms: AWM-A13, AWM-A46, AWM-A71 and AWM-AD.

## 1. Attach slider to monitor

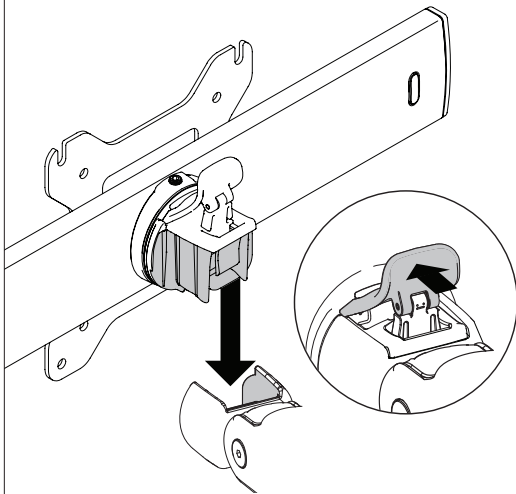
**1.1** Fix the slider onto monitor using the provided screws.



Slider orientation should match your desired monitor orientation, **landscape** or **portrait**.

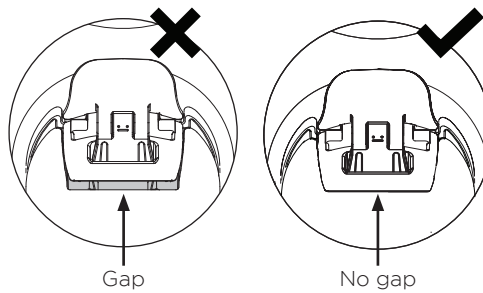
## 2. Mount slider on arm

**2.1** Mount slider onto the monitor arm

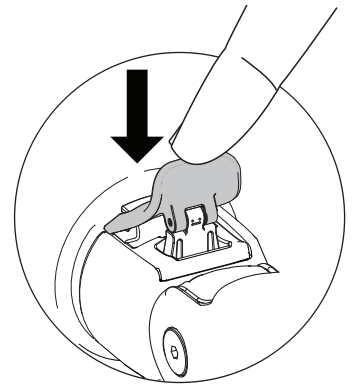


**Note:** Ensure the lever is unlocked when fitting.

**2.2** Ensure that the slider is seated fully into the receptacle at the end of the monitor arm. There should be **no** gap.

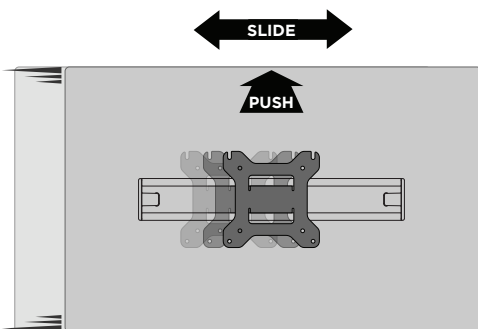


**2.3** Push the lever down to secure it to the arm assembly

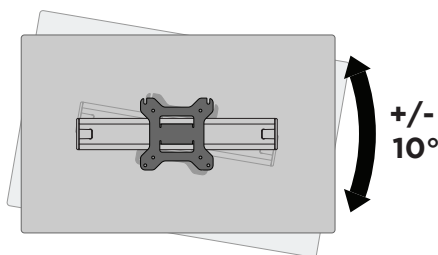


## 3. Adjust the monitor position

**3.1** To adjust the monitor's horizontal position, tilt it back slightly and slide left or right.



**3.2** To level the screen simply rotate it to the desired position.



**3.3 (Optional)** Monitor rotation tension may be adjusted by tightening or loosening a small screw with the provided allen key.

